

Datasheet Recessed Cap

Release date : 12-06-2013

Revision date : 18-10-2017

General information

The Recessed Cap is suitable for hook lifting and closes the pipe against the elements. This protects the internal pipe surface.

Application

The Recessed Cap is placed over the pipe end and clamps itself to the outer pipe surface.

Features

- ✓ Fast and easy fitting and removal
- ✓ Suitable for hook lifting
- ✓ UV-stability

Material specifications

Material	: Low Density Polyethylene (LDPE)
Elasticity at break	: 650 %
Tension at break	: 20 Mpa
Modulus of elasticity	: 300 Mpa
Material thickness	: depends on wall thickness, Inner ring mostly approx. 1,5mm (0.06") Outer ring mostly approx. 3,0mm (0.12") : Depth approx. 90mm (3.54") (other depths available on request)
Product range	: 114mm - 508mm (4" - 20")
Product code	: RC

Commodity / HS code : 39235090

Additional information

- Application temperature: -30°C / 60°C (-22°F / 140°F)
- UV-resistance: For outdoor use: 0,5-2 years
- Application time: less than 1 minute per pipe end



Fig.1 Recessed Cap

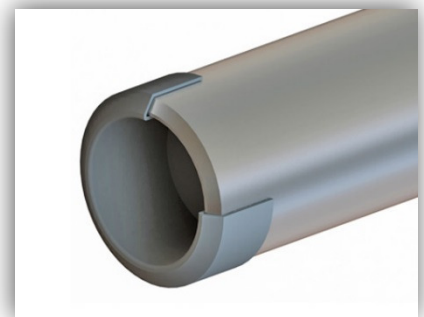


Fig.2 Recessed Cap on pipe

Manufacturing & Sales Company

DHATEC

Dragonder 19
5554 GM Valkenswaard
The Netherlands

Contact Us

T: +31 497 542 527
E: info@dhatec.nl
I: dhatec.nl
sealforlife.com

 **SEALFORLIFE**
Industries