

## Datasheet Blasting Plug Mini

Release date : 16-01-2014  
Revision date : 18-10-2017

### General information

The Blasting Plug Mini provides pipe closure during the external blasting process. The internal pipe surface remains clean and is protected against damage and impact of steel grit.

### Application

Always use two Blasting Plugs during the process: one in each of the pipe ends. The Blasting Plugs are fitted before blasting and removed after the blasting process. For removal, a special tool is required.

### Features

- ✓ No blasting grit inside the pipe
- ✓ Vent hole included to avoid pipe overpressure
- ✓ Strong clamping
- ✓ Reusable

### Material specifications

Plate : Steel S235  
Plate Edge : Manganese Chrome (anti abrasive)  
Adjustable clamping mechanism : EPDM 50° shore A

Product range : 101,6mm – 355,6mm (4"- 14")  
Product code : BPM

Commodity / HS code : 73269098

### Additional information

- Application temperature: -40°C / 120°C (-40°F / 248°F)
- Can run through a pre-heating oven and washing cabin
- Removal tools can be purchased with the Blasting Plugs



Fig.1 Blasting Plug mini

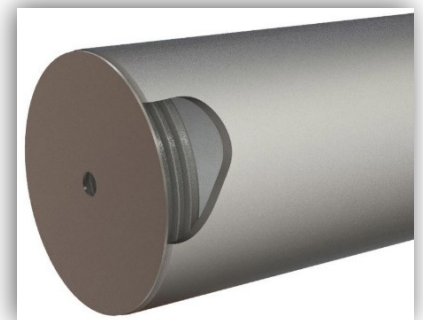


Fig.2 Blasting Plug Mini in pipe

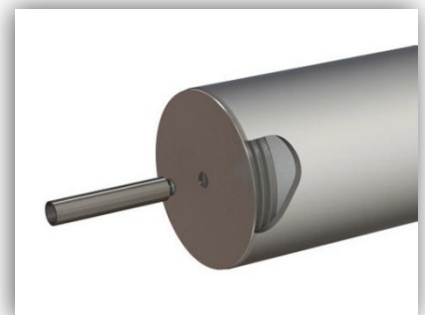


Fig.3 Blasting Plug Mini removal tool