

Datasheet Blasting Plug Mini Adjustable

Release date : 16-01-2014
Revision date : 18-10-2020

General information

The Blasting Plug Mini Adjustable provides pipe closure during the external blasting process. The internal pipe surface remains clean and is protected against damage and impact of steel grit. This product is designed for pipes with the same OD and a wall thickness range of 12mm (i.e. 7mm up to 19mm). With an Allen key, the Blasting Plug is fastened into the pipe and adjusted to the required wall thickness.

Application

Always use two Blasting Plugs during the process: one in each of the pipe ends. The Blasting Plugs are fitted before blasting and removed after the blasting process.

Features

- ✓ No blasting grit inside the pipe
- ✓ Vent holes included to avoid pipe overpressure
- ✓ Strong adjustable clamping system
- ✓ Reusable
- ✓ Adjustable for wall thickness range of 12mm; with a minimal starting wall thickness of 4mm. (i.e. 4mm up to 16mm / 7mm up to 19mm)

Material specifications

Plate : Steel S235
Plate Edge : Manganese Chrome (anti abrasive)
Adjustable clamping mechanism : EPDM 60° shore A

Product rang : 177,8mm – 609,6mm (7" - 24")
Wall thickness range : 12 mm adjustable range, minimal WT 4mm
Product code : BPMA

Commodity / HS code : 73269098

Additional information

- Application temperature: -40°C / 120°C (-40°F / 248°F)
- Can run through a pre-heating oven and washing cabin
- Tool is needed for Installation / removal and adjusting
- Spare parts available:
 - adjustable clamping rubber
 - set of fasteners



Fig.1 Blasting Plug Mini Adjustable

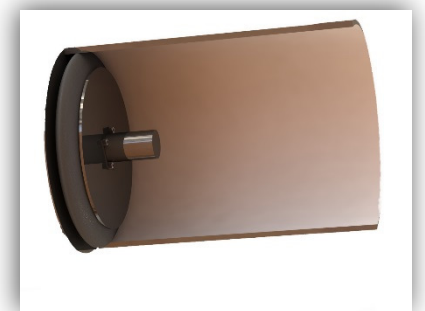


Fig.2 Blasting Plug inside the pipe

Manufacturing & Sales Company

DHATEC
Dragonder 19
5554 GM Valkenswaard
The Netherlands

Contact Us

T: +31 497 542 527
E: info@dhatec.nl
I: dhatec.nl
sealforlife.com

 **SEALFORLIFE**
Industries