

Datasheet Coupling Premium

Release date : 28-01-2014
Revision date : 18-10-2017

General information

The Coupling Premium allows you to achieve optimal quality of the coating application and enhances stability and efficiency of the coating process. The coupling lines up pipes and protects the beveled pipe end during the external coating process. The premium model is especially designed for more heavy circumstances such as: large diameters, oval pipes, small wall thicknesses, curved pipes, high velocities of rotation or unequal support rolls.

Application

When pipes run together during coating, the upcoming pipe is automatically lined up by 3 or 5 centring rolls. The spring in the clamping system bridges thermal expansion of the pipe during pre-heating. For installation and removal of the coupling, a Hydraulic Clamping Tool is required. The tool is positioned on the Coupling. The clamping feet will move inwards to fit the coupling inside the pipe end. When the clamping tool is removed, the Coupling will automatically clamp on the inner surface of the pipe.

For diameter range 203,2mm – 406,4mm (8" - 16") the coupling is provided with 3 centring rolls. For diameter range 253,7mm – 355,6mm (10" - 14") the coupling is provided with 5 centring rolls.

The wall thickness range for diameter 203,2mm – 660,4mm (8" - 26") is 6,35mm – 25,4mm (0.25"-1.00"). The wall thickness range for diameter 711,2mm – 1.626mm (28" - 64") is 6,35mm – 38,1mm (0.25"-1.50")

Features

- ✓ The Coupling stabilizes the coating process
- ✓ Increase of production capacity, higher line speeds possible
- ✓ Equally spread FBE coating thickness
- ✓ Extra strong construction for more heavy circumstances
- ✓ No air seals underneath the PE/PP coating
- ✓ Extra strong construction for more heavy circumstances
- ✓ Radial centring capacity: max 50mm
- ✓ Transport rolls can be placed further apart, allowing the coating to harden more before hitting the first transport roll



Fig.1 Coupling Premium (8" - 16")



Fig.2 Coupling Premium (18" - 26")

Material specifications

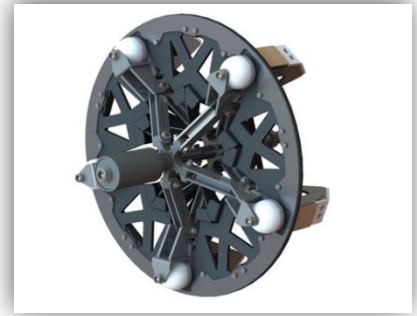
Centring roll	: Nylon 6.6
	: Aluminum
Centring disk	: S355Jr (Material nr. 1.0045)
Plate padding	: Aluminum
Friction pad	: Steel
	: Friction material
Disk springs	: Spring steel / 50 CrV 4 (DIN 17221)
Construction frame	: S235Jr (Material nr. 1.0037)

Product range	: 203,2mm – 1.626mm (8" - 64")
Wall thickness range	: 6,35mm – 38,1mm (0.25" – 1.50")
Product code	: CPR

Commodity / HS code	: 73079980 (steel)
	: 73072980 (stainless steel)

Additional information

- Allowable temperature induction oven: max 240°C (464°F)
- Spare parts available:
 - Centring rolls (incl. fasteners)
 - Centring disks (incl. fasteners)
 - Plate padding (incl. fasteners)
 - Friction pad (incl. fasteners)
 - Disk springs (incl. fasteners)

*Fig.3 Coupling Premium (28"- 64")***Manufacturing & Sales Company****DHATEC**

Dragonder 19
5554 GM Valkenswaard
The Netherlands

Contact Us

T: +31 497 542 527
E: info@dhatec.nl
I: dhatec.nl
sealforlife.com

